

# Fiberglass Basins

## Experience

Let us put our experience to work for you. LFM has been building quality fiberglass reinforced manholes, wetwells and basins since 1982. We utilize the latest in chop and filament winding equipment, therefore providing our customers with the highest quality fiberglass products on the market today. Our production facility is located on 35 acres near Giddings, Texas and covers 83,000 square feet.

## Quality Built Right In

LFM incorporates a comprehensive in-plant testing program. Our quality control enables us to provide our customers with consistent workmanship in every fiberglass basin that we build. We inspect and test each fiberglass basin before it is released for shipping. Wall thickness reports, raw material analysis and continuous chemical analysis reports are just some of the test procedures that we perform. Testing reports are recorded and maintained at our office, and are available upon request.

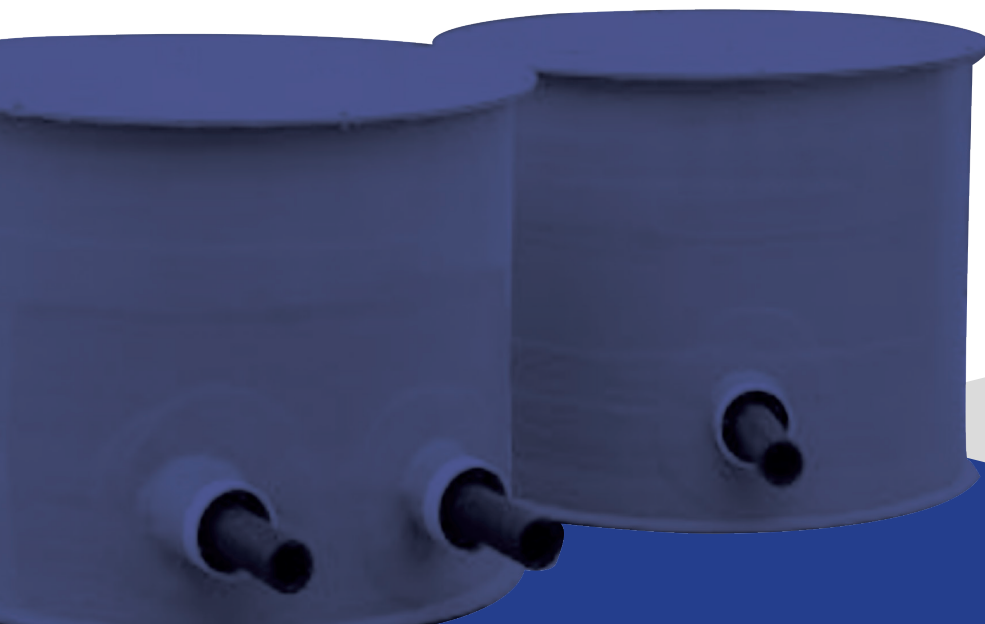
### ■ Economical

Fiberglass basins by LFM are an economical value. The need to repair or replace is greatly reduced because our fiberglass basins can withstand years of exposure to the most severe conditions within a waste water system. As a result, the cost of repairs, disruptive excavations and maintenance is minimized; saving you money over the long run. Our fiberglass basins are also light-weight, making them easier

to handle. This means easier, safer, faster and less costly installations.

### ■ Corrosion Resistant

The environment is always a concern when dealing with waste water systems. Fiberglass basins by LFM are environmentally safe. Our basins are corrosion resistant to waste water gases such as hydrogen sulfide.



**LFM**  
Fiberglass Structures

### ■ Professional Delivery

LFM maintains its own fleet of delivery trucks; helping to lower delivery costs considerably. Our fiberglass basins are light-weight and can be easily loaded and unloaded on construction job sites. Our delivery personnel see to it that our products are shipped on time and safely to their destination.

### ■ Quality Assurance

At LFM, we stand behind the products we build. Our fiberglass basins carry a one-year warranty. Speak to your LFM sales representative for complete details.

### ■ ASTM Certified

Our fiberglass basins are built to meet the rigid requirements of ASTM Specification D3753. LFM strives to supply its customers with the highest quality fiberglass basins available on the market today by meeting and exceeding all applicable ASTM requirements.

### ■ Available Diameters

LFM builds fiberglass basins to your specified dimensions with standard diameters from 24 inches through 96 inches. Depths are available from 2 feet through 20 feet. Greater depths can be custom fabricated. Ask your LFM sales representative for details.

### ■ Design

LFM's fiberglass basins are built with a fiberglass antiflotation bottom which has a 3 inch wide flange to counteract the effects of flotation after installation. Our basins also have an open top with 3 inch wide mounting flange. The mounting flange provides a surface area to attached a cover to the basin. Upon request we can also manufacture a fiberglass cover for our basins.

### ■ Connections

LFM can build fiberglass basins to fit your specific requirements complete with pipe stub outs already in place, making installation and assembly easier and less time consuming.

### ■ Valve Boxes

LFM offers a fiberglass valve box that can be attached directly to the basin, making a one piece fiberglass unit for lift station packages. This saves time and money during installation. The valve box is 48 inches square and also has an open top with a 3 inch wide mounting flange.

### ■ Pump Mounting Bolts

LFM can install pump mounting bolt glassed into the bottom of our basins. This allows easier installation of pumps into our basins.

#### Summary of Test Results

Tests Performed	Average Results
Stiffness	5% Deflection @ 2.45 lbs. / in <sup>2</sup> 10% Deflection @ 2.28 lbs. / in <sup>2</sup>
Material Composition	54.25 wt. % Resin
Compressive Strength	Transverse: 22,7000 psi Longitudinal: 10,500 psi
Flexural Strength	Transverse: 56,000 psi Longitudinal: 11,700 psi
Modulus	Transverse: 2,084,000 psi Longitudinal: 1,114,000 psi
Load Rating	24,000 lbs. - 0.157" Deflection 40,000 lbs. - No Damage
Barcol Hardness	Cylinder: 43.1 Reducer: 41.0
Wall Thickness	Cylinder: 0.308
Soundness	No Leaks Detected at 5 psi Air Pressure