

Experience...

Let us put our experience to work for you. LFM has been building quality fiberglass reinforced manholes and wetwells since 1982. We utilize the latest in chop and filament winding equipment, therefore providing our customers with the highest quality fiberglass products on the market today. Our production facility is located on 35 acres near Giddings, Texas and covers 83,000 square feet.



Corrosion Resistant...

Our wetwells are corrosion resistant to wastewater gases such as hydrogen sulfide. Over a short period of time, concrete wetwells can start to leak or decay. Fiberglass wetwells by LFM can withstand years of exposure to the most severe conditions within a wastewater system.

Economical...

Fiberglass wetwells by LFM are an economical value. Our fiberglass wetwells have a longer service life than concrete wetwells. As a result, the cost of repairs, disruptive excavations and maintenance is minimized; saving you money over the long run.

Professional Delivery...

LFM maintains its own fleet of delivery trucks; helping to lower delivery costs considerably. Our fiberglass wetwells are light-weight and can be more easily loaded and unloaded on construction job sites than conventional concrete wetwells. Our delivery personnel see to it that our products are shipped on time and safely to their destination.

Quality Built Right In...

LFM incorporates a comprehensive in-plant testing program. Our quality control enables us to provide our customers with consistent workmanship in every fiberglass wetwell that we build. We inspect and test each fiberglass wetwell before it is released for shipping. Wall thickness reports, raw material analysis and continuous chemical analysis reports are just some of the test procedures that we perform. Testing reports are recorded and maintained at our office, and are available upon request.

Light-weight...

Fiberglass wetwells and basins by LFM are light-weight, making them easier to handle. This means easier, safer, faster and less costly installations.



Available Diameters...

LFM builds fiberglass manholes to your specified dimensions with standard diameters from 36 inches through 15 & 1/2 feet. Depths are available from 2 feet through 40 feet. Greater depths can be custom fabricated. Ask your LFM sales representative for details. We manufacture several different wall thicknesses for different load, depth and diameter specifications. LFM also incorporates a ribbed wall system into wetwells requiring added strength. Reinforced FRP tops and bottoms are also available. Contact your LFM sales representative to find out which dimensions best suit your needs.

Connections...

LFM can build fiberglass wetwells to fit your specific requirements complete with pipe stub outs already in place, making installation easier and less time consuming. We also offer alternative methods for connecting pipe to our fiberglass wetwells such as Kor-N-Seal™ boots, as well as connectors from other manufacturers.

Quality Assurance...

We stand behind the products that we build. Our fiberglass wetwells carry a one year limited warranty. For additional information, see the warranty section of our brochure.

ASTM Certified...

Our fiberglass wetwells are built to meet the rigid requirements of ASTM Specification D3753. LFM strives to supply its customers with the highest quality fiberglass wetwells available on the market today by meeting and exceeding all applicable ASTM requirements.

Installation...

Prepare the excavation in a normal manner. Measure and cut holes for any existing pipes. Next, pour the concrete base and insert the wetwell into the wet concrete. Use the provided lifting lugs to lift the wetwell. After the wetwell has been leveled and set to proper grade, pour concrete over the anti-flotation flange. Finally, backfill to engineer's specifications using moderately compacted sand or crushed stone. The backfill should be added evenly in one foot lifts. Note: always observe all safety rules and regulations when installing fiberglass wetwells.

Summary of Test Results

Tests Performed	Average Results
Stiffness	5% Deflection @ 2.45 lbs. / in ² 10% Deflection @ 2.28 lbs. / in ²
Material Composition	54.25 wt. % Resin
Compressive Strength	Transverse: 22,7000 psi Longitudinal: 10,500 psi
Flexural Strength	Transverse: 56,000 psi Longitudinal: 11,700 psi
Modulus	Transverse: 2,084,000 psi Longitudinal: 1,114,000 psi
Load Rating	24,000 lbs. – 0.157" Deflection 40,000 lbs. – No Damage
Barcol Hardness	Cylinder: 43.1 Reducer: 41.0
Wall Thickness	Cylinder: 0.308
Soundness	No Leaks Detected at 5 psi Air Pressure

5528 E. Highway 290
Giddings, Texas 78942
Phone 800.237.5791
Fax 979.542.0911

300 W. Riddleville Road
Karnes City, Texas 78118
Phone 800.237.5791
Fax 979.542.0911

2450 Industrial Boulevard
Waycross, Georgia 31503
Phone 912.285.7576
Fax 912.285.7553

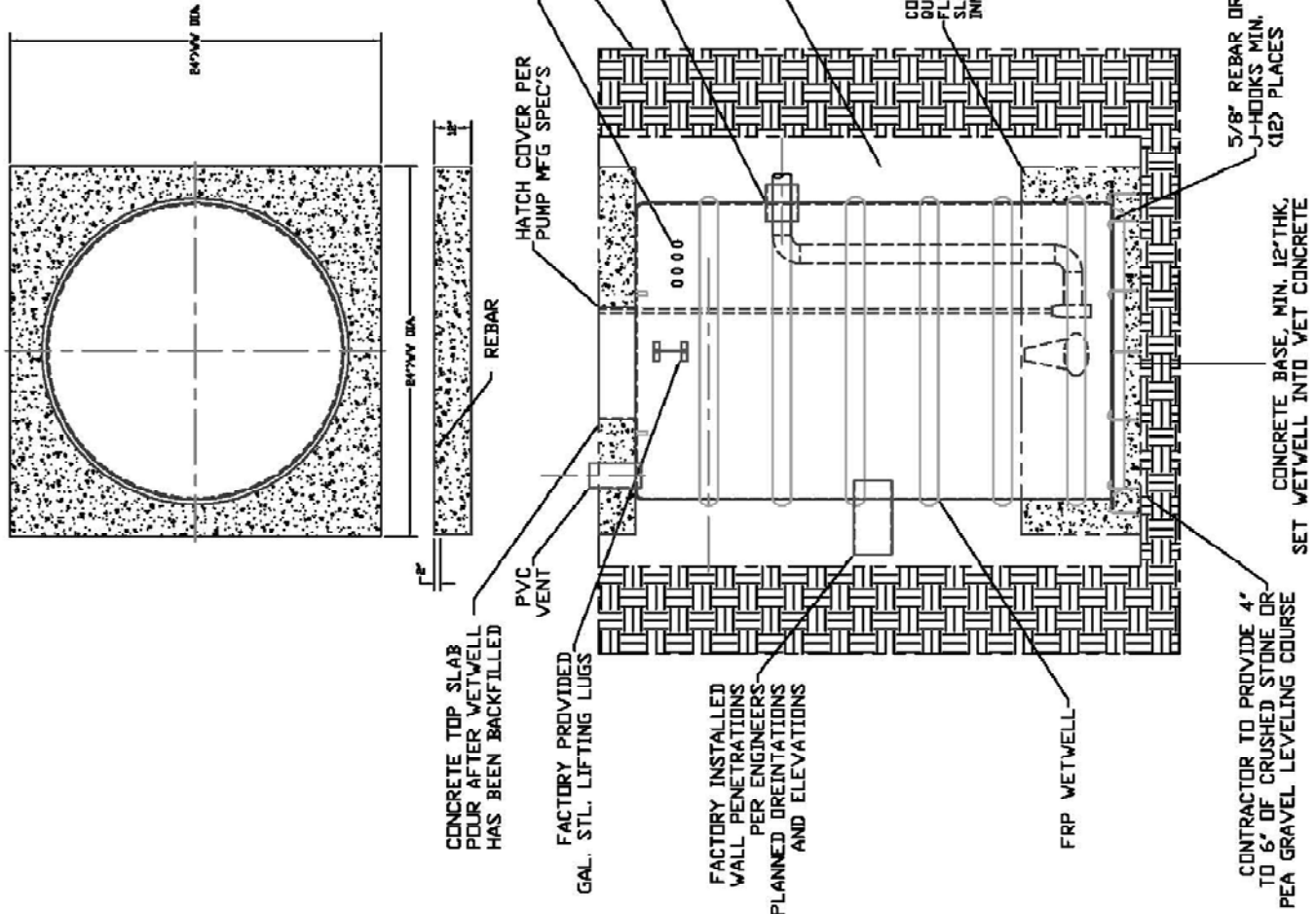


Technical Support & Sales:

800.237.5791
www.lfm-frp.com

NOTES:

1. WETWELL DESIGNED, FABRICATED, INSPECTED, TESTED AND MARKED IN ACCORDANCE WITH A.S.T.M. D-3753 SPEC'S CURRENT EDITION.
 2. SIGNED APPROVED DRAWING REQUIRED BEFORE START OF MANUFACTURING. DATE: _____
- (>) APPROVED _____
- (>) APPROVED AS NOTED _____
- (>) REVISE & RESUBMIT _____

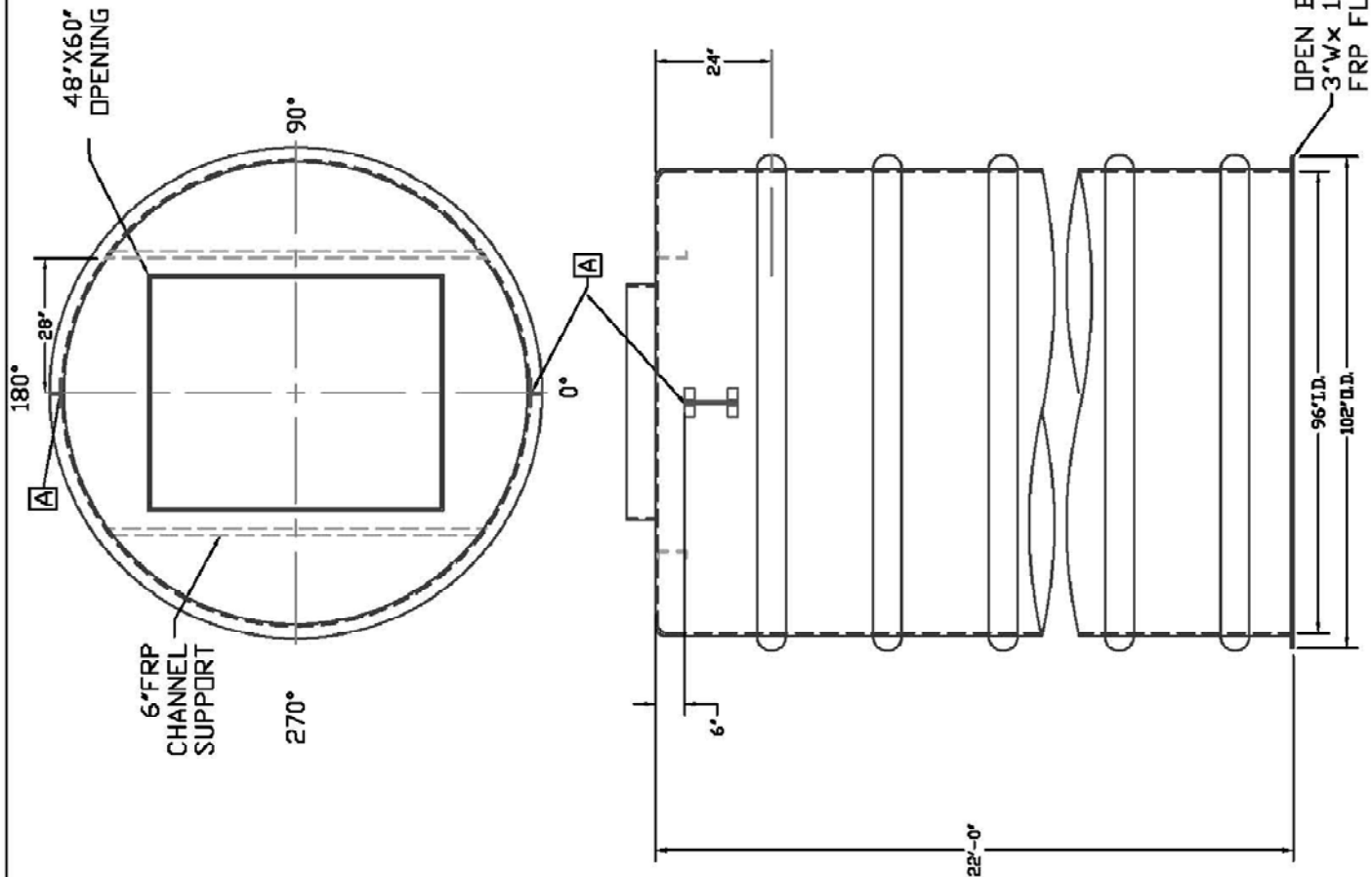


DESCRIPTION		OPER. PRESS.	
INSTALLATION GUIDE FOR WETWELLS		DESIGN SP. GR. OPERATING SP. GR.	
COLOR	RESIN	DESIGN TEMP.	OPER. TEMP.
TOLERANCES: FRACTION = 1/4 DECIMAL		DESIGN SP. GR. OPERATING SP. GR.	
UNLESS OTHERWISE SPECIFIED		OPER. PRESS.	
OTHER:		DESIGN SP. GR. OPERATING SP. GR.	
DRW BY: SCALE: REV.	S.D. NO.	DATE:	
MMB NONE 02/21/06 T.J.J. REV. C		08/14/02	
CHK BY: APP BY: DWG NO.	QUOTE NO.	SNP	
JDM	A-WW2880	1	OF 1
SOLD BY CUSTOMER		JOB	

LFM

FRP SPECIALISTS

L.F. MANUFACTURING, INC.
 (800) 237-5791
 (979) 542-8027
 FAX # (979) 542-0811



NOTES:

1. WETWELL DESIGNED, FABRICATED, INSPECTED, TESTED AND MARKED IN ACCORDANCE WITH A.S.T.M. D-3753 SPEC'S CURRENT EDITION.
 2. WETWELL TO BE INSTALLED BY INSERTING INTO WET CONCRETE. REFER TO L. F. MFG., INC. SPECIFICATION #LP1056SP FOR INSTALLATION RECOMMENDATIONS.
 3. SIGNED APPROVED DRAWING REQUIRED BEFORE START OF MANUFACTURING. DATE: _____
- (>) APPROVED AS NOTED _____
 (>) APPROVED AS NOTED _____
 (>) REVISE & RESUBMIT _____

A 2 LIFTING LOG(GALV.STL)		PROJ.	
IDENTITY/DESC. DESCRIPTION		TOLERANCES FRACTION = 1/4 DECIMAL	
96" DIA. FRP WETWELL		* = ±.250 ** = ±.062 *** = ±.010 UNLESS OTHERWISE SPECIFIED	
COLOR	RESIN	LINER	
GRAY	ORTHOPHTHALIC	GRAY ISOPHTHALIC	
DESIGN TEMP.	OPERATING TEMP.	DESIGN PRESS.	OPER. PRESS.
AMBIENT	AMBIENT	ATMOS.	ATMOS
SERVICE	DESIGN SP. GR.	OPERATING SP. GR.	
WASTEWATER	1.2	1.2 MAX	
OWN BY/SCALE	REV.	S.D. NO.	DATE
T.L.J.	NONE		06/05/03
CHK BY/APP BY/ DVG NO.		QUOTE NO.	SR#
DB	JDM	A-WW3256	34775
SOLD BY/CUSTOMER			1 OF 2
DB			

LFM L.F. MANUFACTURING, INC.
 (800) 237-5791
 (979) 542-8027
 FRP SPECIALISTS FAX # (979) 542-0911